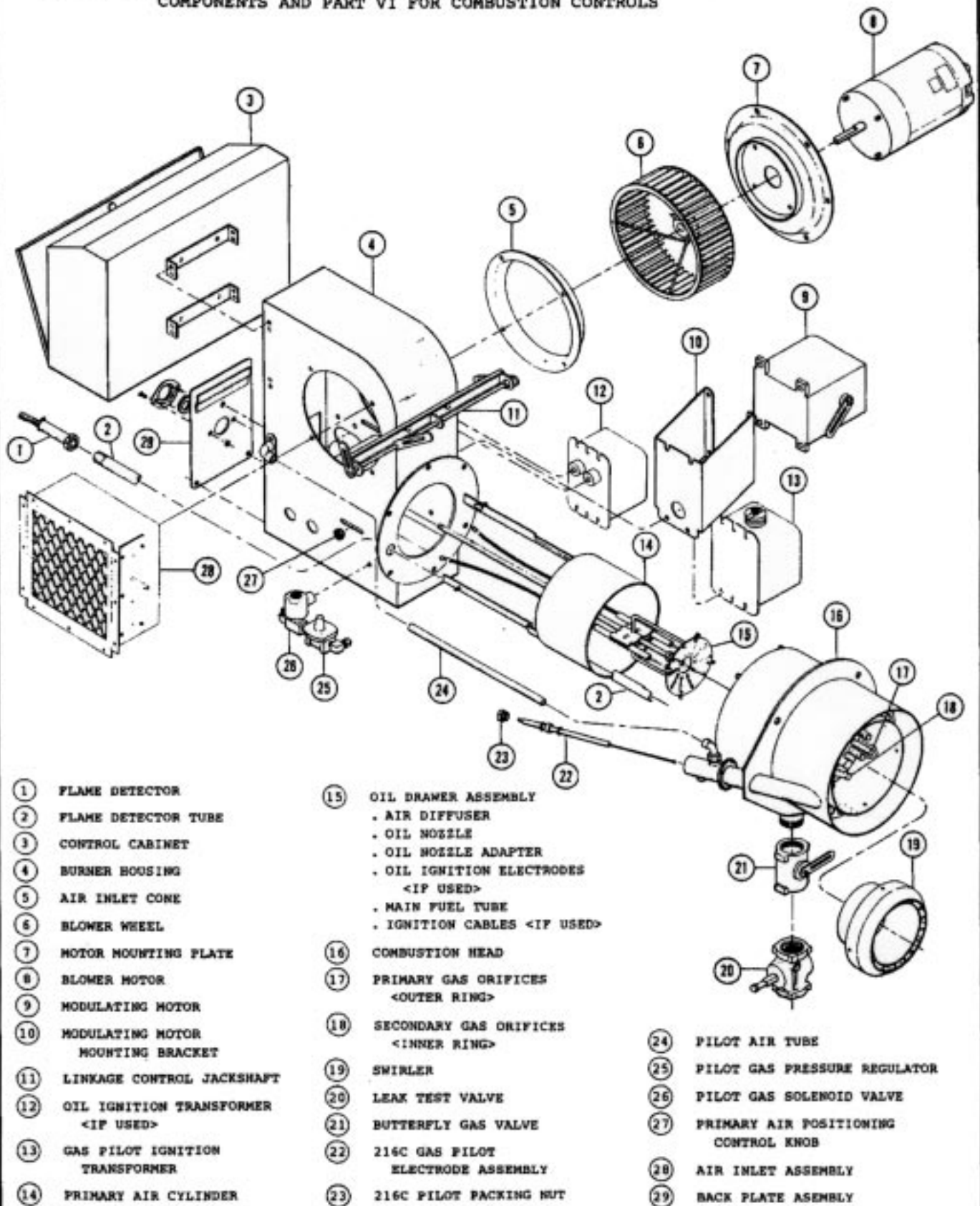


TYPICAL R10 or R12 GAS-OIL BURNER

NOTE

SEE PART IV FOR GAS SYSTEM COMPONENTS, PART V FOR OIL SYSTEM COMPONENTS AND PART VI FOR COMBUSTION CONTROLS



- ① FLAME DETECTOR
- ② FLAME DETECTOR TUBE
- ③ CONTROL CABINET
- ④ BURNER HOUSING
- ⑤ AIR INLET CONE
- ⑥ BLOWER WHEEL
- ⑦ MOTOR MOUNTING PLATE
- ⑧ BLOWER MOTOR
- ⑨ MODULATING MOTOR
- ⑩ MODULATING MOTOR MOUNTING BRACKET
- ⑪ LINKAGE CONTROL JACKSHAFT
- ⑫ OIL IGNITION TRANSFORMER <IF USED>
- ⑬ GAS PILOT IGNITION TRANSFORMER
- ⑭ PRIMARY AIR CYLINDER

- ⑮ OIL DRAWER ASSEMBLY
 - . AIR DIFFUSER
 - . OIL NOZZLE
 - . OIL NOZZLE ADAPTER
 - . OIL IGNITION ELECTRODES <IF USED>
 - . MAIN FUEL TUBE
 - . IGNITION CABLES <IF USED>
- ⑯ COMBUSTION HEAD
- ⑰ PRIMARY GAS ORIFICES <OUTER RING>
- ⑱ SECONDARY GAS ORIFICES <INNER RING>
- ⑲ SWIRLER
- ⑳ LEAK TEST VALVE
- ㉑ BUTTERFLY GAS VALVE
- ㉒ 216C GAS PILOT ELECTRODE ASSEMBLY
- ㉓ 216C PILOT PACKING NUT

- ㉔ PILOT AIR TUBE
- ㉕ PILOT GAS PRESSURE REGULATOR
- ㉖ PILOT GAS SOLENOID VALVE
- ㉗ PRIMARY AIR POSITIONING CONTROL KNOB
- ㉘ AIR INLET ASSEMBLY
- ㉙ BACK PLATE ASSEMBLY