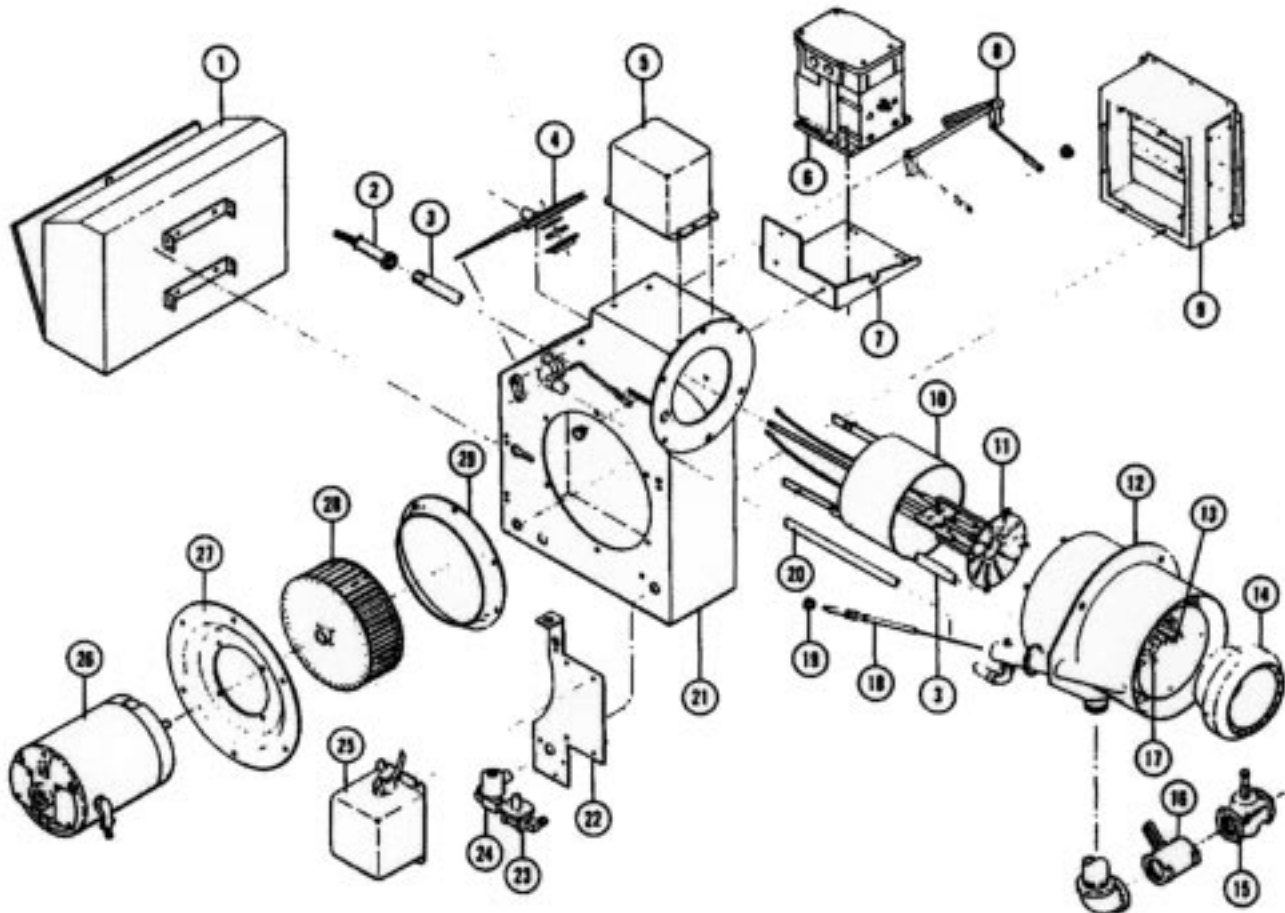


## TYPICAL S10 or S12 GAS-OIL BURNER

**NOTE**

SEE PART IV FOR GAS SYSTEM COMPONENTS, PART V FOR OIL SYSTEM COMPONENTS AND PART VI FOR COMBUSTION CONTROLS



- |   |   |   |
|---|---|---|
| <p>① CONTROL CABINET</p> <p>② FLAME DETECTOR</p> <p>③ FLAME DETECTOR TUBE</p> <p>④ BACK PLATE ASSEMBLY</p> <p>⑤ OIL IGNITION TRANSFORMER<br/>    &lt;IF USED&gt;</p> <p>⑥ MODULATING MOTOR</p> <p>⑦ MODULATING MOTOR<br/>    MOUNTING BRACKET &lt;IF USED&gt;</p> <p>⑧ MODULATING PRIMARY AIR<br/>    CYLINDER LINKAGE ASSEMBLY</p> <p>⑨ AIR INLET ASSEMBLY</p> <p>⑩ PRIMARY AIR CYLINDER</p> | <p>⑪ OIL DRAWER ASSEMBLY<br/>    - AIR DIFFUSER<br/>    - OIL NOZZLE<br/>    - OIL NOZZLE ADAPTER<br/>    - OIL IGNITION ELECTRODES<br/>    &lt;IF USED&gt;<br/>    - MAIN FUEL TUBE<br/>    - IGNITION CABLES &lt;IF USED&gt;</p> <p>⑫ COMBUSTION HEAD</p> <p>⑬ PRIMARY GAS ORIFICES<br/>    &lt;OUTER RING&gt;</p> <p>⑭ SWIRLER</p> <p>⑮ LEAK TEST VALVE</p> <p>⑯ BUTTERFLY GAS VALVE</p> <p>⑰ SECONDARY GAS ORIFICES<br/>    &lt;INNER RING&gt;</p> <p>⑱ 216C GAS PILOT<br/>    ELECTRODE ASSEMBLY</p> | <p>⑲ 216C PILOT PACKING NUT</p> <p>⑳ PILOT AIR TUBE</p> <p>㉑ BURNER HOUSING</p> <p>㉒ TRANSFORMER MOUNTING<br/>    BRACKET</p> <p>㉓ PILOT GAS PRESSURE<br/>    REGULATOR</p> <p>㉔ PILOT SOLENOID VALVE</p> <p>㉕ GAS PILOT IGNITION<br/>    TRANSFORMER</p> <p>㉖ BLOWER MOTOR</p> <p>㉗ MOTOR MOUNTING PLATE</p> <p>㉘ BLOWER WHEEL</p> <p>㉙ AIR INLET CONE</p> |
|---|---|---|