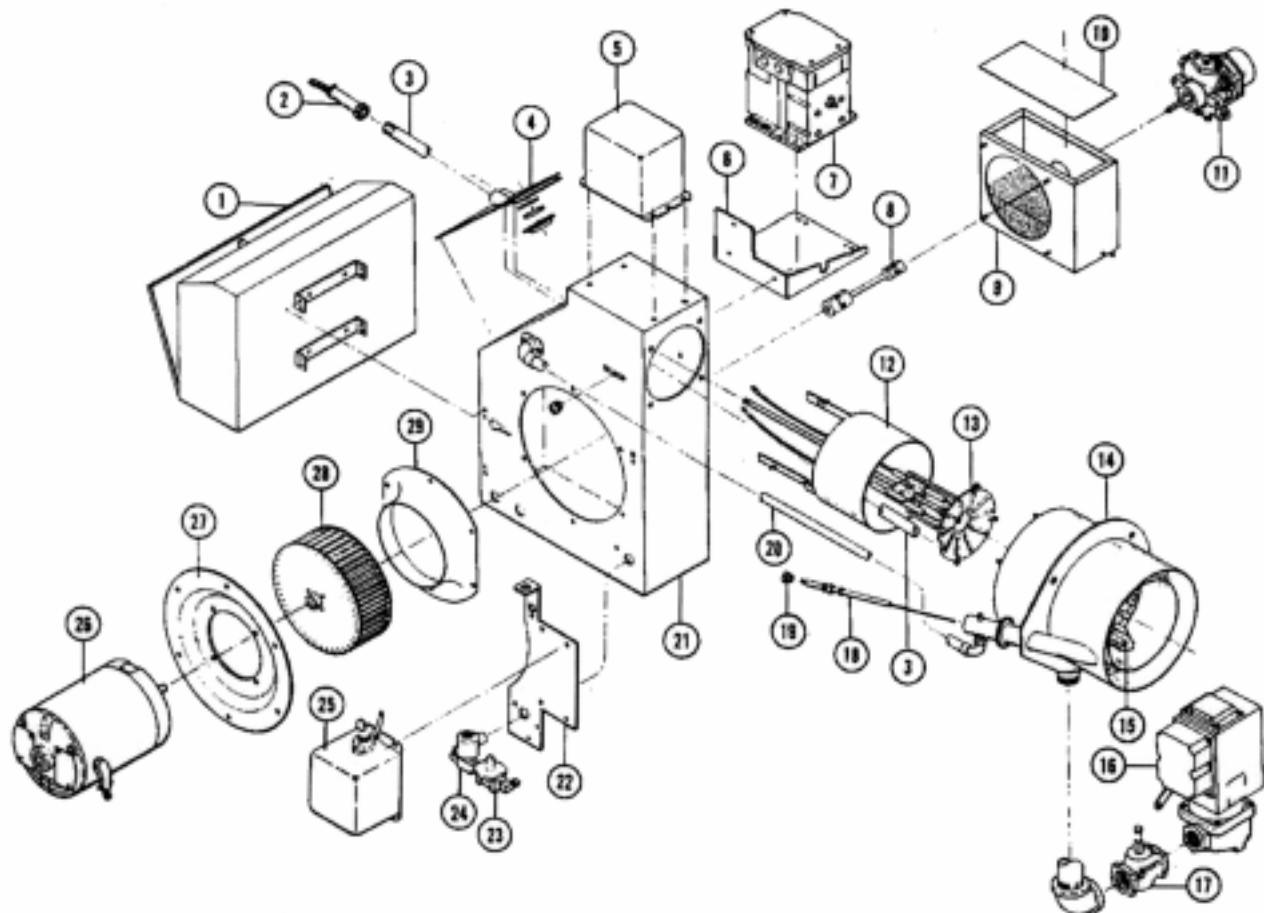


## TYPICAL S6, S7 or S8 GAS-OIL BURNER

**NOTE**

SEE PART IV FOR GAS SYSTEM COMPONENTS, PART V FOR OIL SYSTEM COMPONENTS AND PART VI FOR COMBUSTION CONTROLS



- |  |  |                                  |
|--|--|----------------------------------|
| ① CONTROL CABINET                                | ⑩ AIR INLET BOX COVER                  | ⑲ 216C PILOT PACKING NUT         |
| ② FLAME DETECTOR                                 | ⑪ OIL PUMP                             | ⑳ PILOT AIR TUBE                 |
| ③ FLAME DETECTOR TUBE                            | ⑫ PRIMARY AIR CYLINDER                 | ㉑ BURNER HOUSING                 |
| ④ BACK PLATE ASSEMBLY                            | ⑬ OIL DRAWER ASSEMBLY                  | ㉒ TRANSFORMER MOUNTING BRACKET   |
| ⑤ OIL IGNITION TRANSFORMER<br><IF USED>          | . AIR DIFFUSER                         | ㉓ PILOT GAS PRESSURE REGULATOR   |
| ⑥ MODULATING MOTOR<br>MOUNTING BRACKET <IF USED> | . OIL NOZZLE                           | ㉔ PILOT SOLENOID VALVE           |
| ⑦ MODULATING MOTOR                               | . OIL NOZZLE ADAPTER                   | ㉕ GAS PILOT IGNITION TRANSFORMER |
| ⑧ OIL PUMP COUPLING                              | . OIL IGNITION ELECTRODES<br><IF USED> | ㉖ BLOWER MOTOR                   |
| ⑨ AIR INLET ASSEMBLY                             | . MAIN FUEL TUBE                       | ㉗ MOTOR MOUNTING PLATE           |
| . AIR LOUVER                                     | . IGNITION CABLES <IF USED>            | ㉘ BLOWER WHEEL                   |
| . AIR LOUVER SPRING                              | ⑭ COMBUSTION HEAD                      | ㉙ AIR INLET CONE                 |
| . OIL CYLINDER MOUNTING SPRING                   | ⑮ GAS ORIFICES                         |                                  |
| . LOUVER ACTUATOR ARM                            | ⑯ AUTOMATIC GAS VALVE                  |                                  |
| . AIR INLET GUARD                                | ⑰ LEAK TEST VALVE                      |                                  |
|  | ⑱ 216C GAS PILOT ELECTRODE ASSEMBLY    |                                  |